

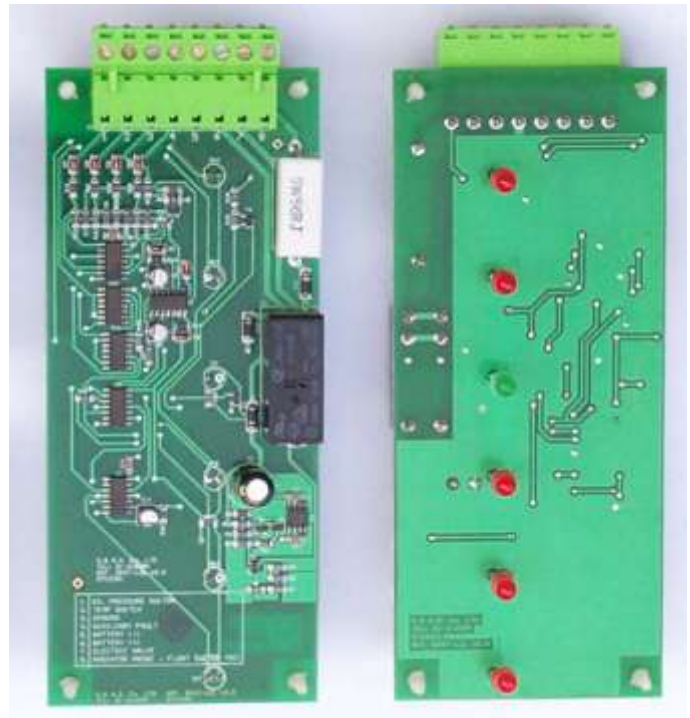
DIESEL KEY START BOARD WITH LOW COOLANT SMD – DKSTLS

FEATURES

- Fault bypass timer
- Low oil pressure alarm and shutdown
- High coolant temperature alarm and shutdown
- Dynamo failure alarm and shutdown
- Auxiliary fault alarm and shutdown
- Low coolant level alarm and shutdown
- Dynamo excitation
- Electric valve release timer if engine doesn't start within 15 sec
- Green led to indicate that engine is running
- Dedicated red led for each fault condition
- Universal supply voltage
- Wiring through plug in connector

ABSOLUTE MAXIMUM RATINGS

Supply voltage	30Vdc
Auxiliary contacts	8A ac1
Operating temperature	0 to 70°C



TOP VIEW

BOTTOM VIEW

OPERATION

The **DKSTLS** is a basic engine protection board. It incorporates the necessary logic to implement full protection of the diesel engine. When powered the **DKSTLS** monitors the oil pressure switch as well as the dynamo excitation line. The fault bypass timer is enabled only after the oil pressure switch opens or the voltage on the dynamo excitation line exceeds 8 volts (in other terms when the engine is running). The low coolant level is a high impedance input. It connects to a radiator probe. The small current flowing via this probe through the coolant into the body of the engine and thus battery negative supply is enough to signal to the board logic that the radiator has enough coolant in it. This input is active as soon as the board is powered. After the elapse of the 15sec timed by the fault bypass timer, the remaining four faults inputs are active and a voltage of 0 to 1volts on any of these inputs will cause an immediate alarm signaled by the corresponding led and shutdown of the engine. All other fault inputs are immediately disabled following a fault on a specific input. If the engine does not start within 15sec, the electric valve is disabled without signaling any faults. A green led signals that the engine is running.

SPECIFICATION

Operating voltage	8 to 28vdc
Response delay to faults	15sec
Auxiliary contact rating	5A 250 V ac1
Dimensions	61mmx141mm

INSTALLATION

- Terminal 1: oil pressure switch.
- Terminal 2: engine temperature switch.
- Terminal 3: dynamo excitation.
- Terminal 4: input for auxiliary fault, active low.
- Terminal 5: negative supply from battery (-Vbat).
- Terminal 6: positive supply from battery (+Vbat) through key start switch.
- Terminal 7: electric valve output.
- Terminal 8: radiator probe or float switch (Normally Closed)



S. & A. S. LTD

Beirut Office:
Boutros Building 1st Basement
Cheikh-el-Ghabi Street
Ghabi Beirut 2068 7808
Lebanon
Tel: +961 1 216 994
Fax: +961 1 339 600

Headquarters & Factory:
S. & A. S. Building
Seaside Road
Jieh Chouf
Lebanon
Tel: +961 7 996 333
Fax: +961 7 996 116

Website:
www.sascontrollers.com

Technical Support & Email:
Tel: +961 71 996 333
support@sascontrollers.com