

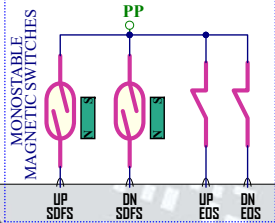
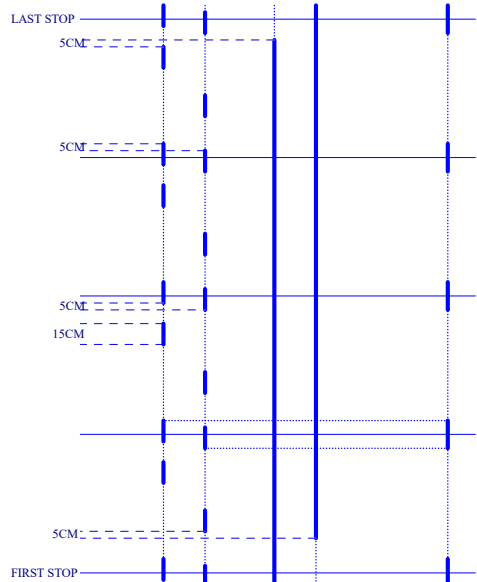
ASTRA V1.2 BOARD

S. & A.S. Ltd.  
 Jieh Chouf  
 Lebanon  
 support@sascontrollers.com

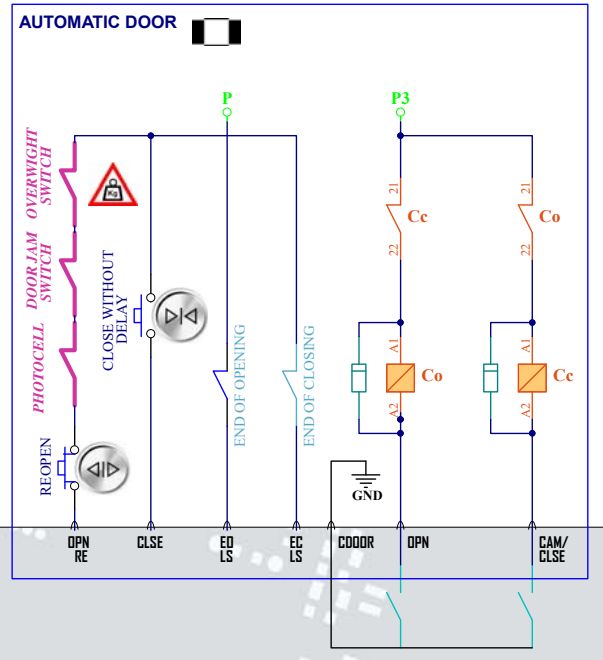
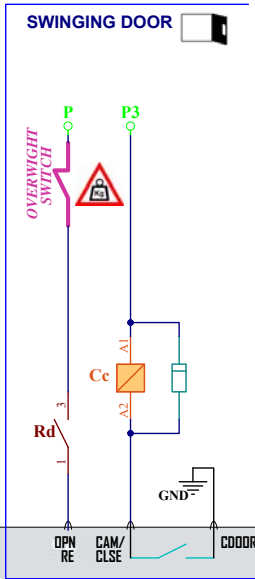
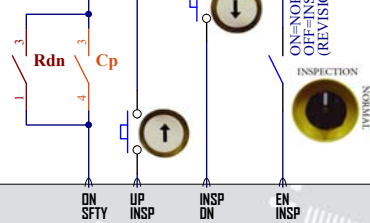
ASTRA WIRING DIAG: SUPPLY & OUTPUTS - HYDRAULIC DOL

DC Contactors

|            |                 |  |          |
|------------|-----------------|--|----------|
| Size<br>B  | FCSM No.<br>-   | DWG No.<br>BA120W1_Hyd_Supply_ContDC.Sch | Rev<br>1 |
| Scale<br>- | Sheet<br>1 of 9 |  |          |



ZP  
DOOR ZONE  
MAGNETIC SWITCH



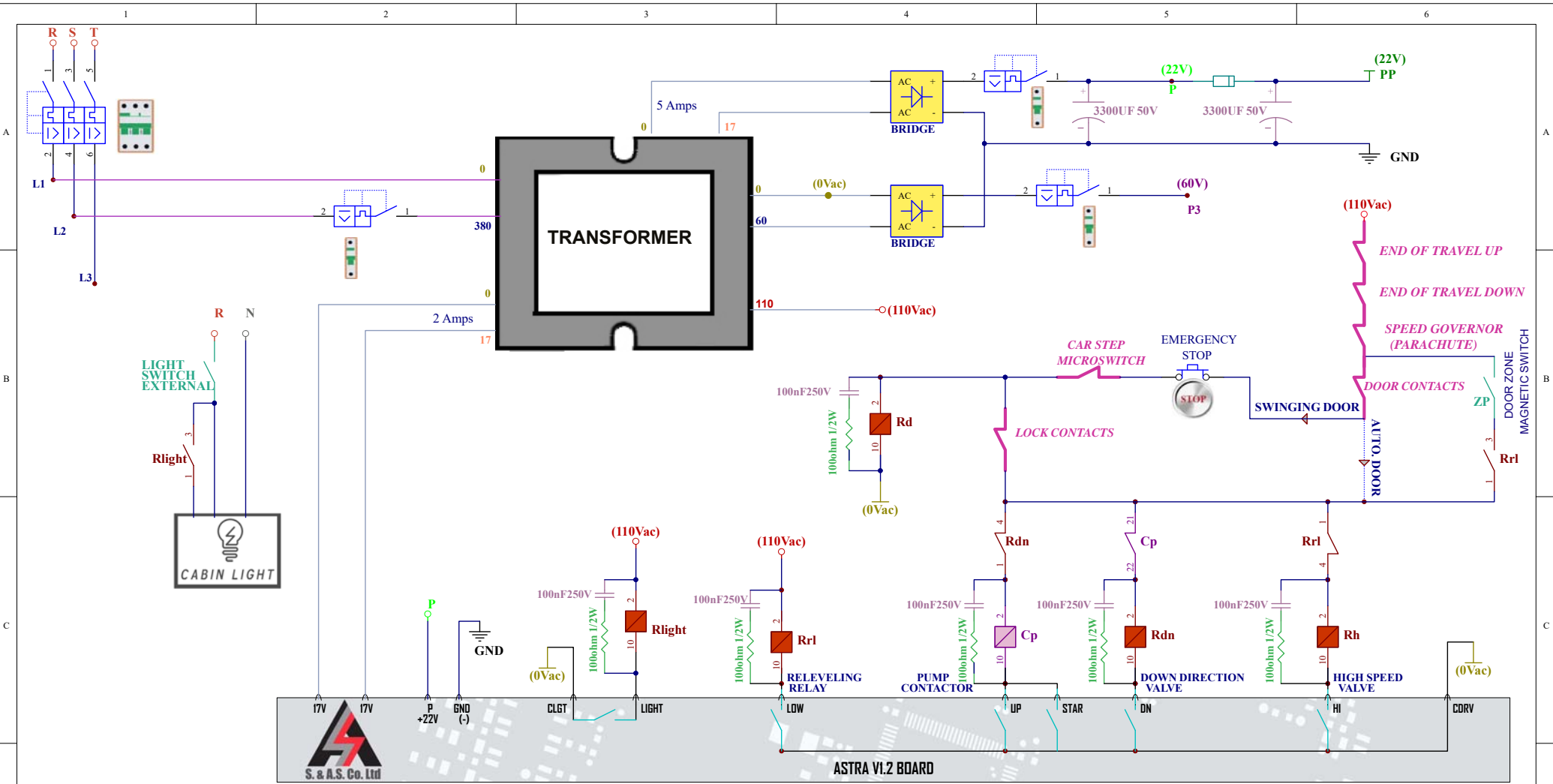
ASTRA V1.2 BOARD

Note:  
1- Use always the Monostable Magnetic Switches configuration for Hydraulic drive.

S.&A.S. Ltd.  
Jieh Chouf  
Lebanon  
support@sascontrollers.com

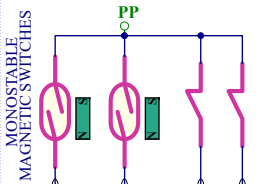
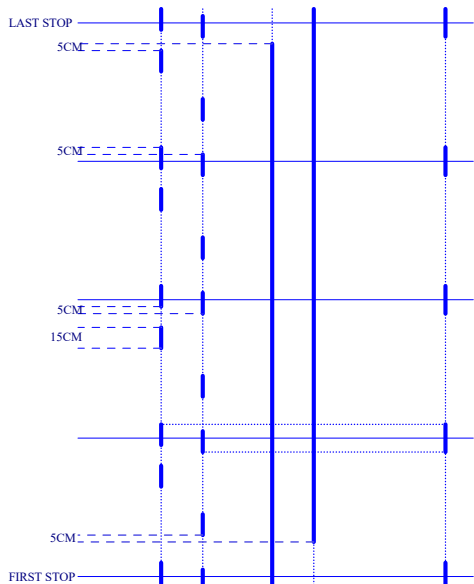
ASTRA WIRING DIAG: **INPUTS/DOOR INFO - HYDRAULIC DRIVE**  
DC Contactors

|        |          |                            |        |
|--------|----------|----------------------------|--------|
| Size B | FCSM No. | DWG No.                    | Rev    |
|        |          | BA120W2_Hyd_lps_ContDC.Sch | 1      |
| Scale  | Sheet    |                            | 2 of 9 |

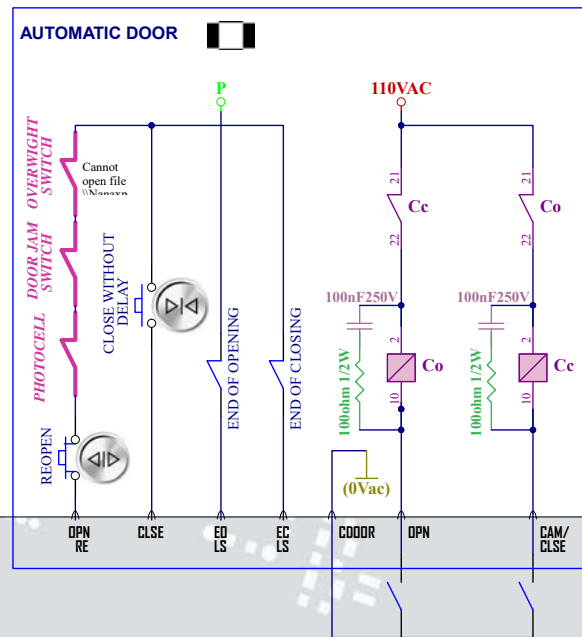
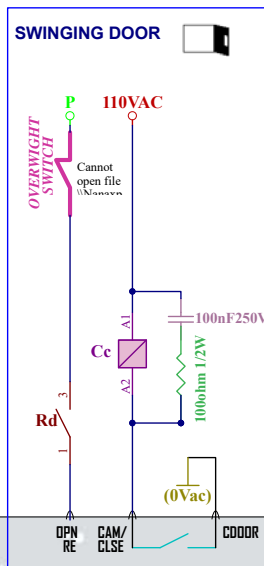
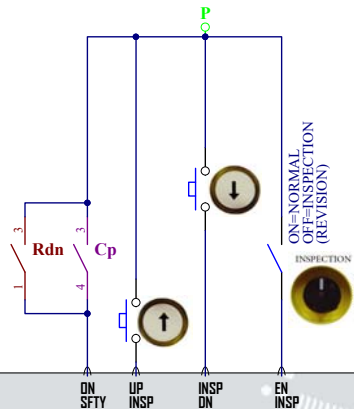
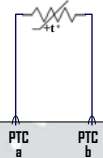


ASTRA VI.2 BOARD

|   |                 |  |          |
|---|-----------------|--|----------|
| S. & A.S. Ltd.<br>Jieh Chouf<br>Lebanon<br>support@sascontrollers.com |                 |  |          |
| ASTRA WIRING DIAG: SUPPLY & OUTPUTS - HYDRAULIC DOL<br>AC Contactors  |                 |  |          |
| Size<br>B   | FCSM No.<br>-   | DWG No.<br>BA120W3_Hyd_Supply_ContAC.Sch | Rev<br>1 |
| Scale<br>-  | Sheet<br>3 of 9 |  |          |



ZP DOOR ZONE MAGNETIC SWITCH



ASTRA V1.2 BOARD

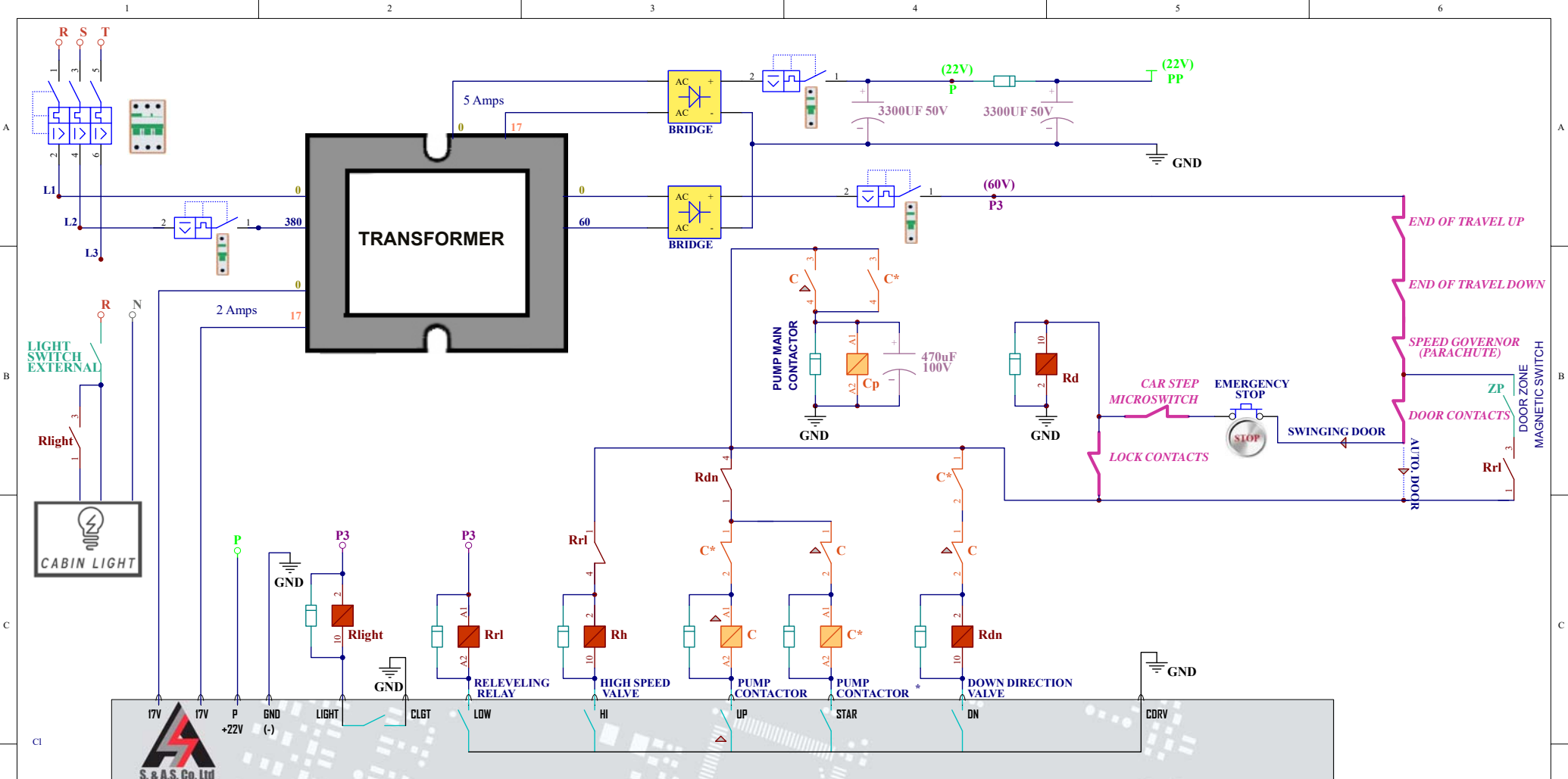
Note:

1- Use always the Monostable Magnetic Switches configuration for Hydraulic drive.

S.&A.S. Ltd.  
Jieh Chouf  
Lebanon  
support@sascontrollers.com

ASTRA WIRING DIAG: INPUTS/DOOR INFO - HYDRAULIC DRIVE  
AC Contactors

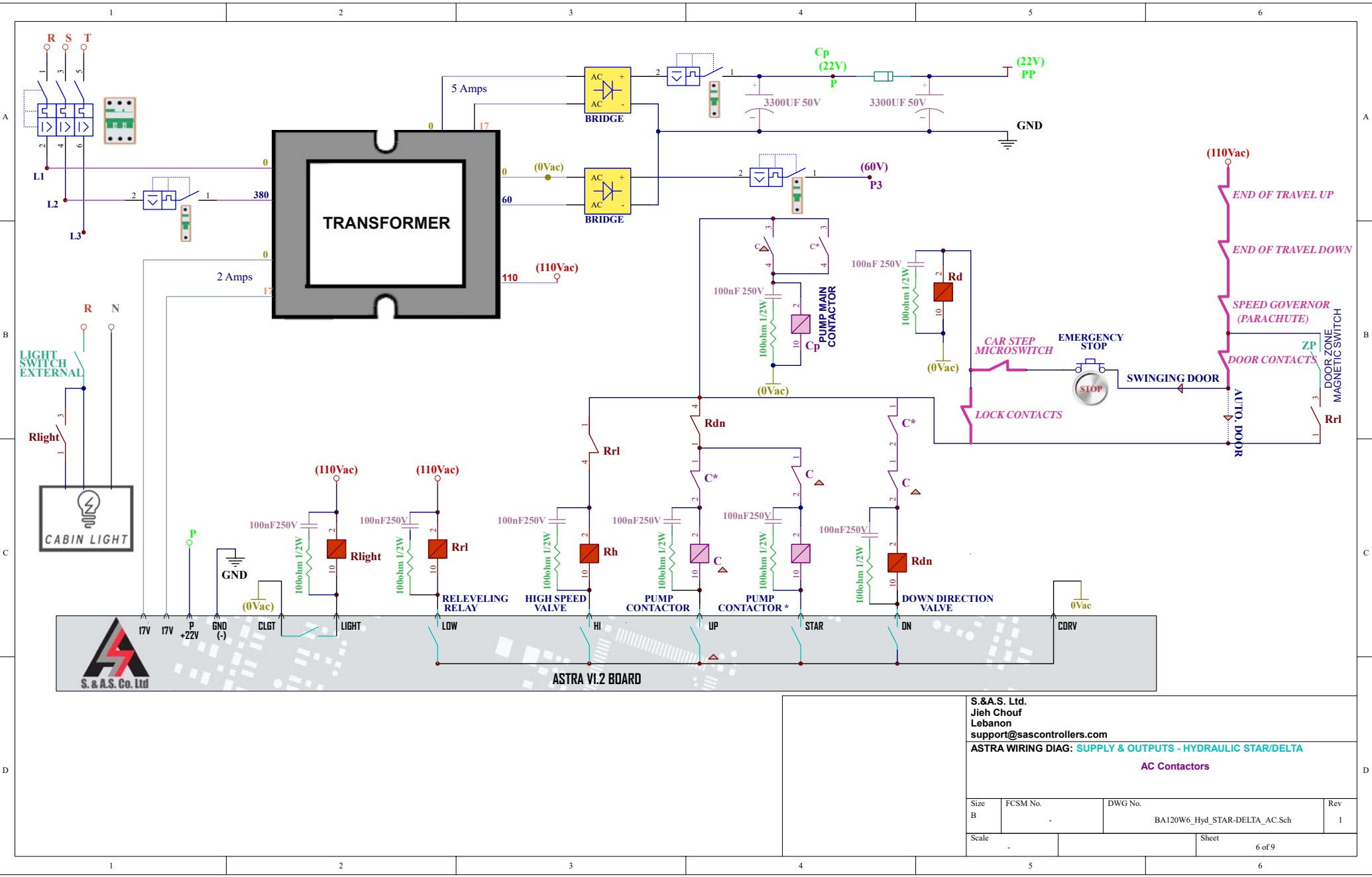
|        |          |                            |        |
|--------|----------|----------------------------|--------|
| Size B | FCSM No. | DWG No.                    | Rev    |
|        |          | BA120W4_Hyd_Ips_ContAC.Sch | 1      |
| Scale  |          | Sheet                      | 4 of 9 |



S.&A.S. Ltd.  
 Jieh Chouf  
 Lebanon  
 support@sascontrollers.com  
**ASTRA WIRING DIAG: SUPPLY & OUTPUTS - HYDRAULIC STAR/DELTA**

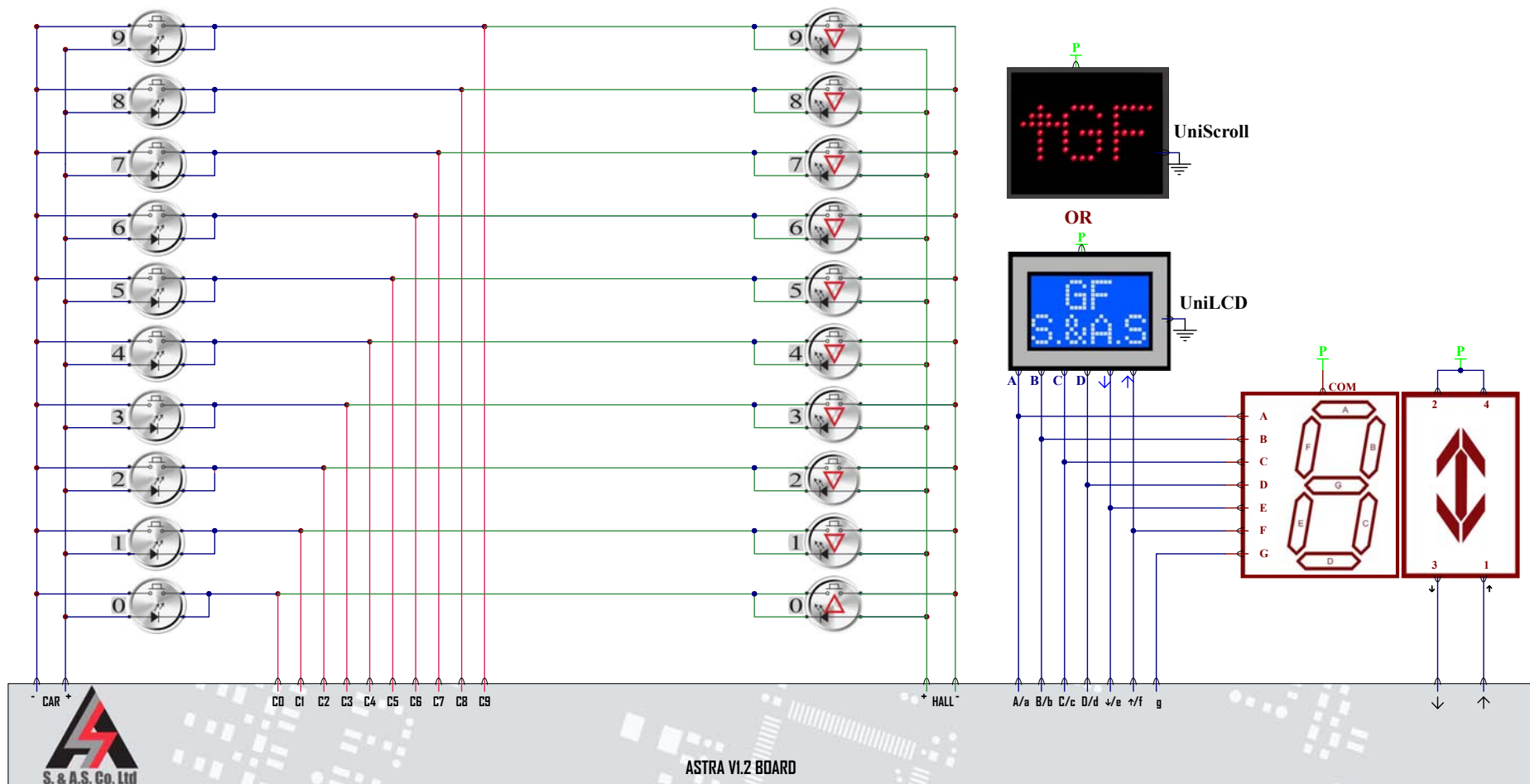
**DC Contactors**

|        |          |                            |        |
|--------|----------|----------------------------|--------|
| Size B | FCSM No. | DWG No.                    | Rev    |
|        |          | BA120W5_Hyd_STAR-DELTA.Sch | 1      |
| Scale  |          | Sheet                      | 5 of 9 |



S.&A.S. Ltd.  
 Jieh Chouf  
 Lebanon  
 support@sascontrollers.com  
**ASTRA WIRING DIAG: SUPPLY & OUTPUTS - HYDRAULIC STAR/DELTA**  
 AC Contactors

|        |          |                               |        |
|--------|----------|-------------------------------|--------|
| Size B | FCSM No. | DWG No.                       | Rev    |
|        |          | BA120W6_Hyd_STAR-DELTA_AC.Sch | 1      |
| Scale  |          | Sheet                         | 6 of 9 |



ASTRA V1.2 BOARD

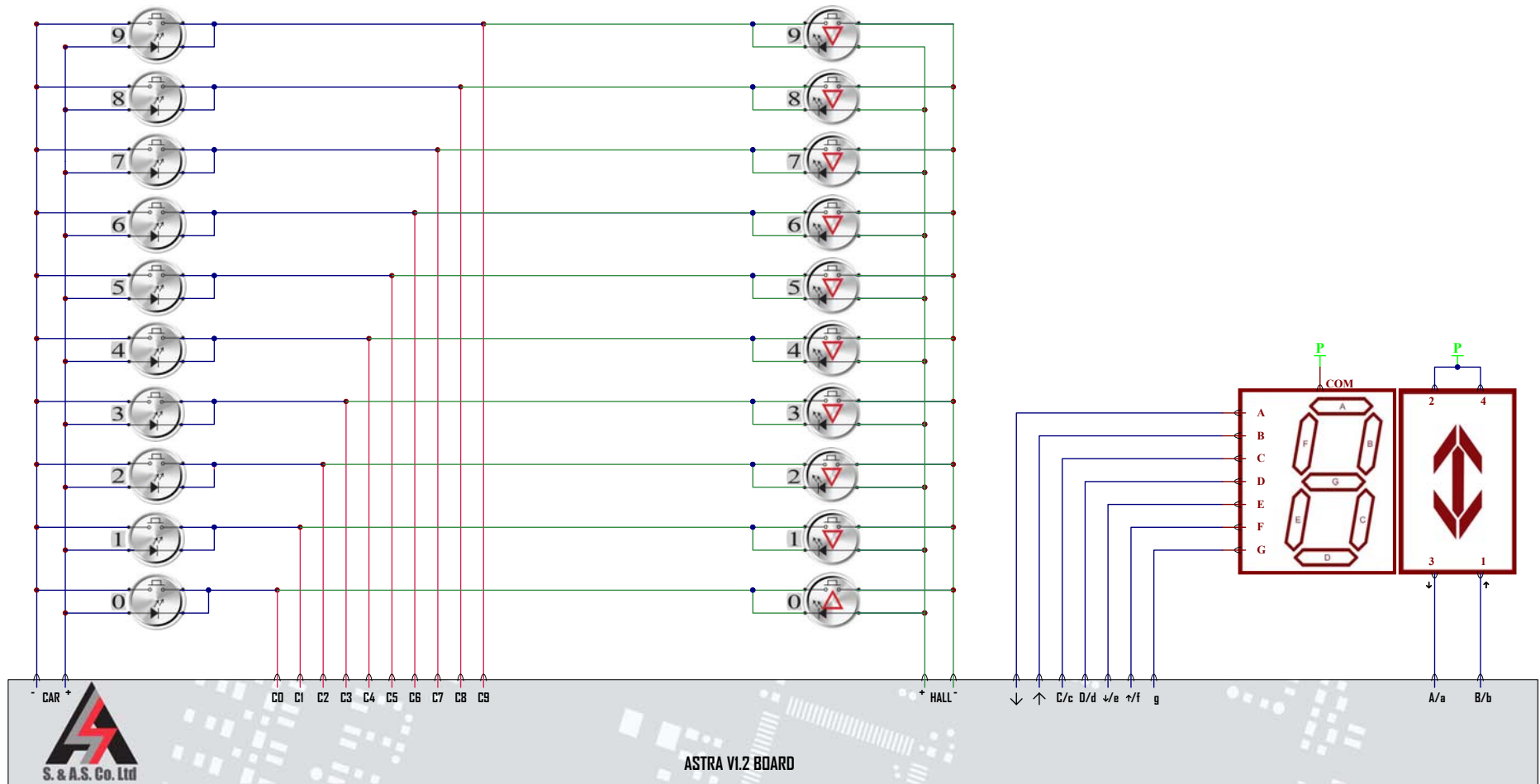
INDICATR="ENHANCED" or  
"7SEGARO-"

COLLECTV="DOWN"

S.&A.S. Ltd.  
Jieh Chouf  
Lebanon  
support@sascontrollers.com

ASTRA WIRING DIAG: CALLS / FLOOR INFORMATION - Down Collective- 10 stops

|            |                  |  |          |
|------------|------------------|--|----------|
| Size<br>B  | FCSM No.<br>-    | DWG No.<br>BA120W7_Calls_Dn10-Enhanced-7SEGARO-Sch | Rev<br>1 |
| Scale<br>- | Sheet<br>7 of 12 |  |          |



INDICATR="7SEGARO+"

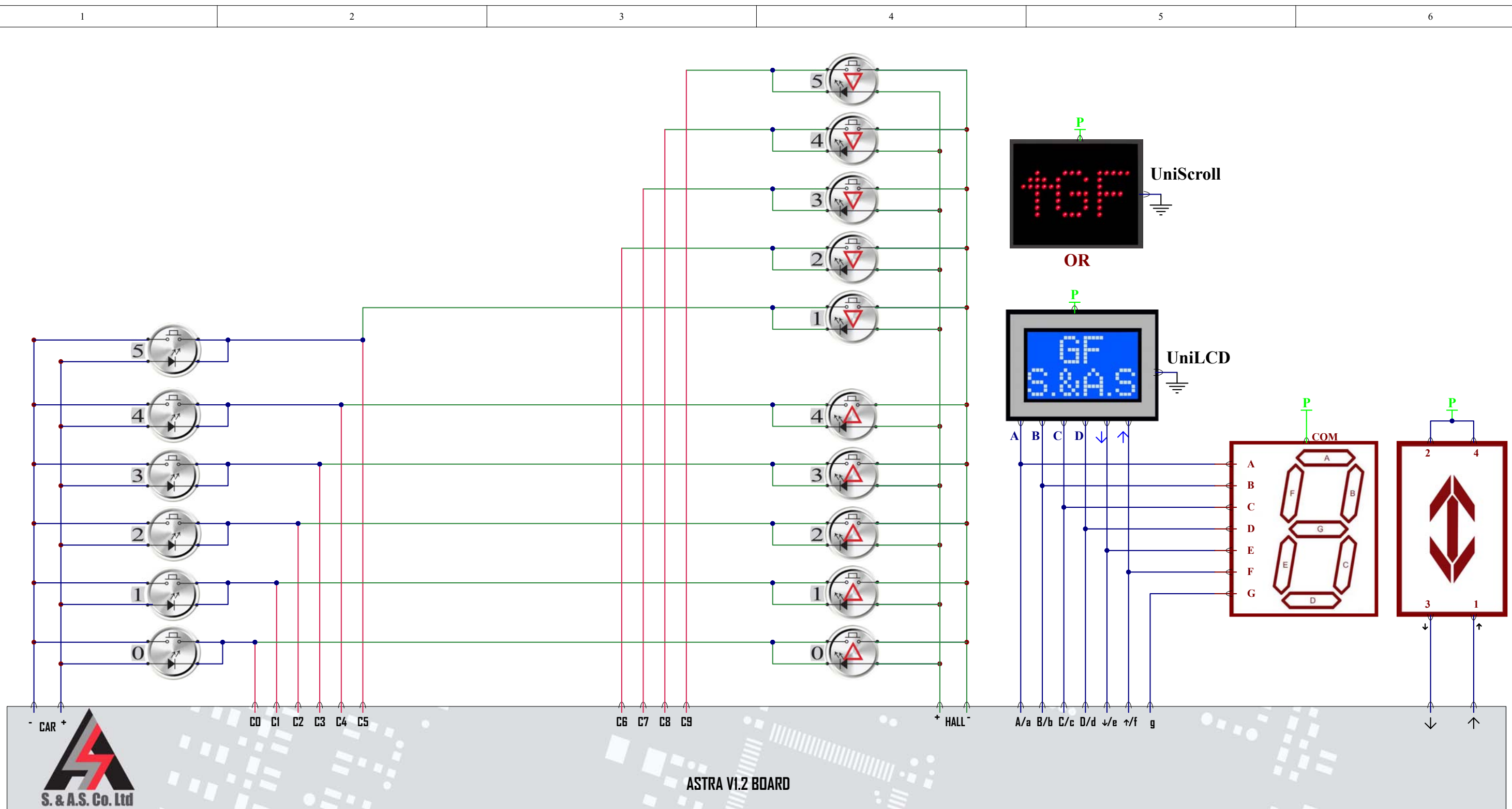
COLLECTV="DOWN"

S.&A.S. Ltd.  
 Jieh Chouf  
 Lebanon  
 support@sascontrollers.com

ASTRA WIRING DIAG: CALLS / FLOOR INFORMATION - Down Collective- 10 stops

|            |                  |  |          |
|------------|------------------|--|----------|
| Size<br>B  | FCSM No.<br>-    | DWG No.<br>BA120W8_Calls_Dn10 - 7SEGARO+.Sch | Rev<br>1 |
| Scale<br>- | Sheet<br>8 of 12 |  |          |

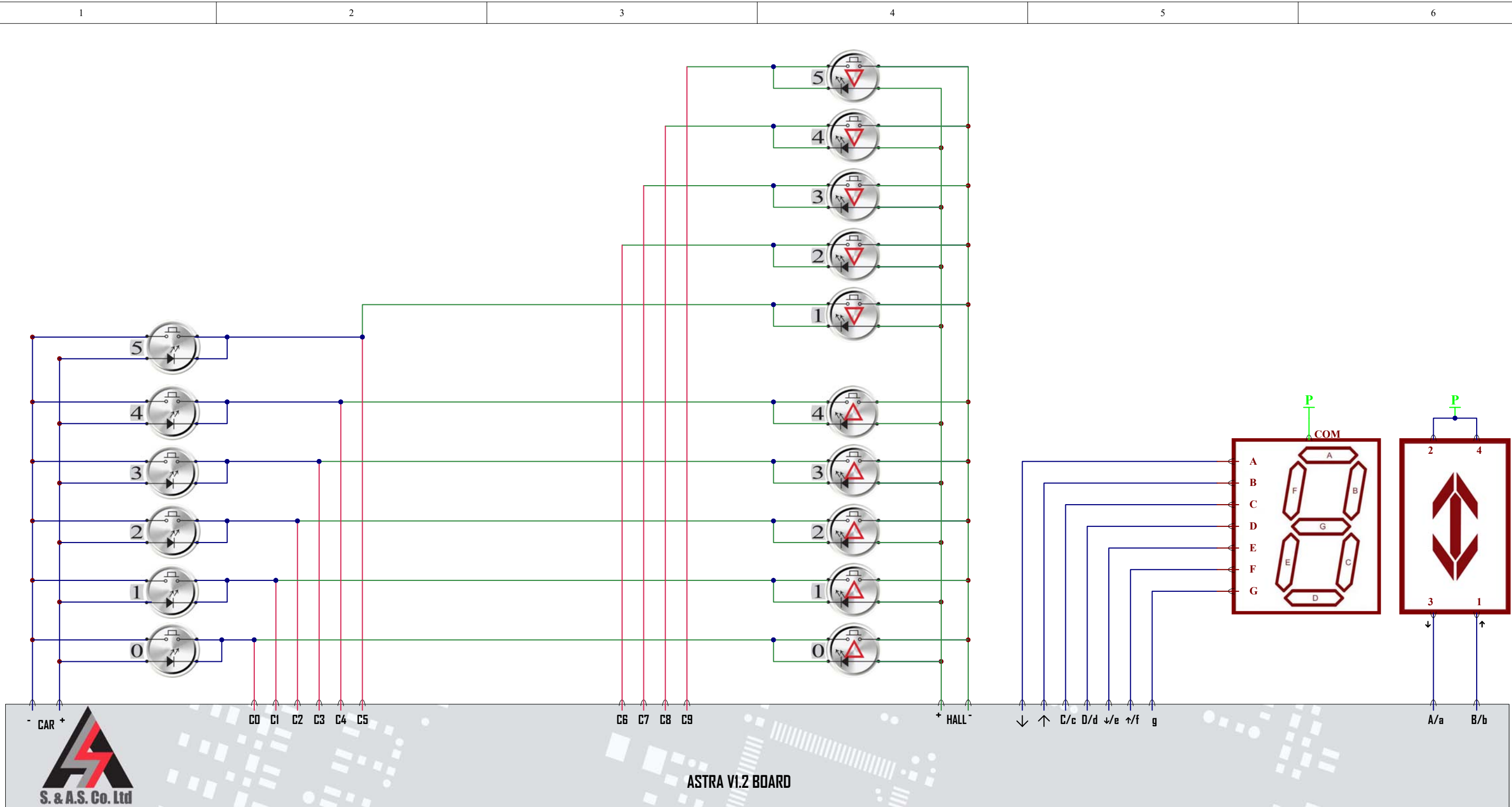




INDICATR="ENHANCED" or "7SEGARO-"  
 COLLECTV="FULL"

S.&A.S. Ltd.  
 Jieh Chouf  
 Lebanon  
 support@sascontrollers.com  
 ASTRA WIRING DIAG: CALLS / FLOOR INFORMATION - Full Collective- 6 stops

|            |                  |   |          |
|------------|------------------|---|----------|
| Size<br>B  | FCSM No.<br>-    | DWG No.<br>BA120W9_Calls_Full6-Enhanced-7SEGARO-Sch | Rev<br>1 |
| Scale<br>- | Sheet<br>9 of 12 |   |          |



ASTRA VI.2 BOARD

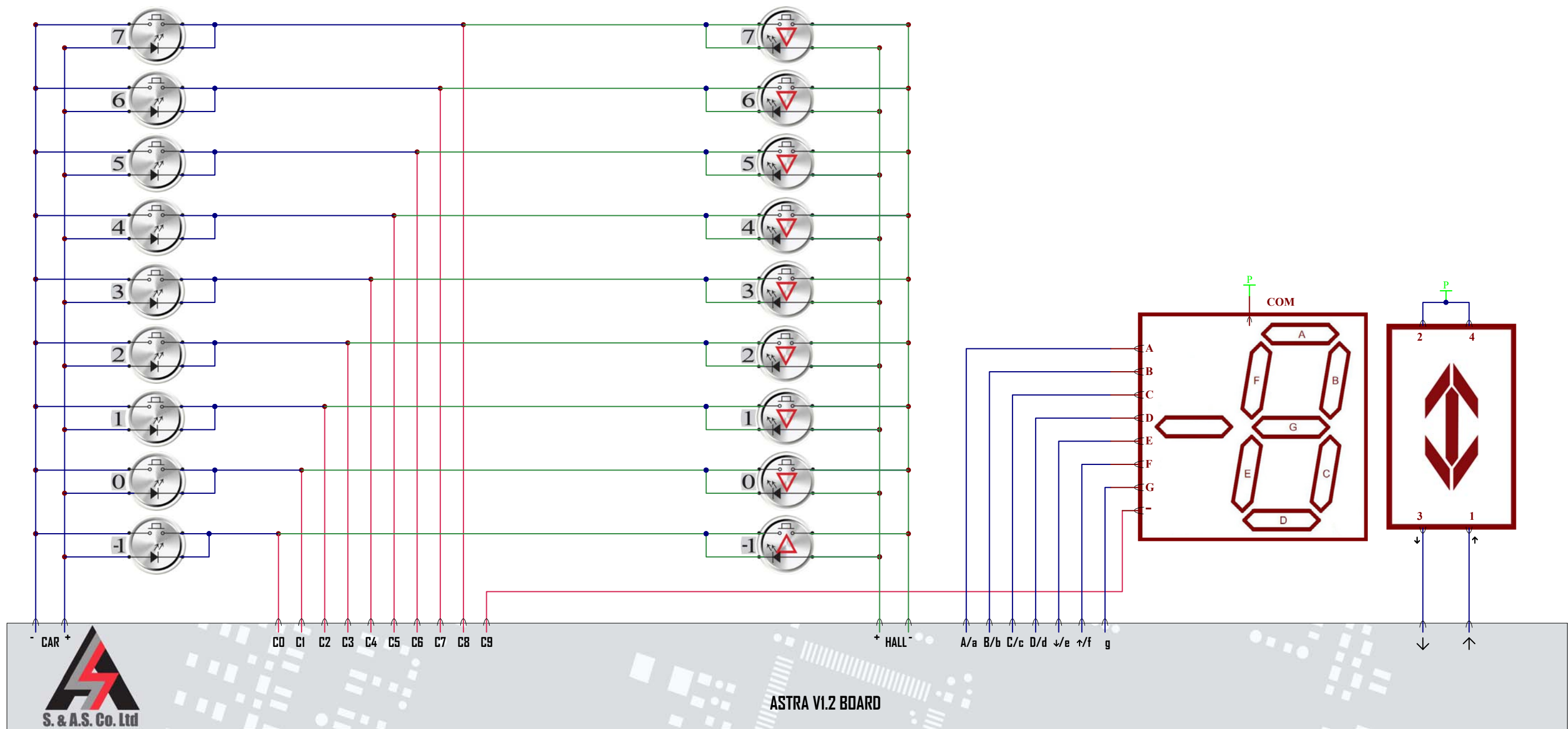
INDICATR="7SEGARO+"

COLLECTV="FULL"

S.&A.S. Ltd.  
Jieh Chouf  
Lebanon  
support@sascontrollers.com

ASTRA WIRING DIAG: CALLS / FLOOR INFORMATION - Full Collective- 6 stops

|            |                   |  |          |
|------------|-------------------|--|----------|
| Size<br>B  | FCSM No.<br>-     | DWG No.<br>BA120W10_Calls_Full6 - 7SEGARO+.Sch | Rev<br>1 |
| Scale<br>- | Sheet<br>10 of 12 |  |          |



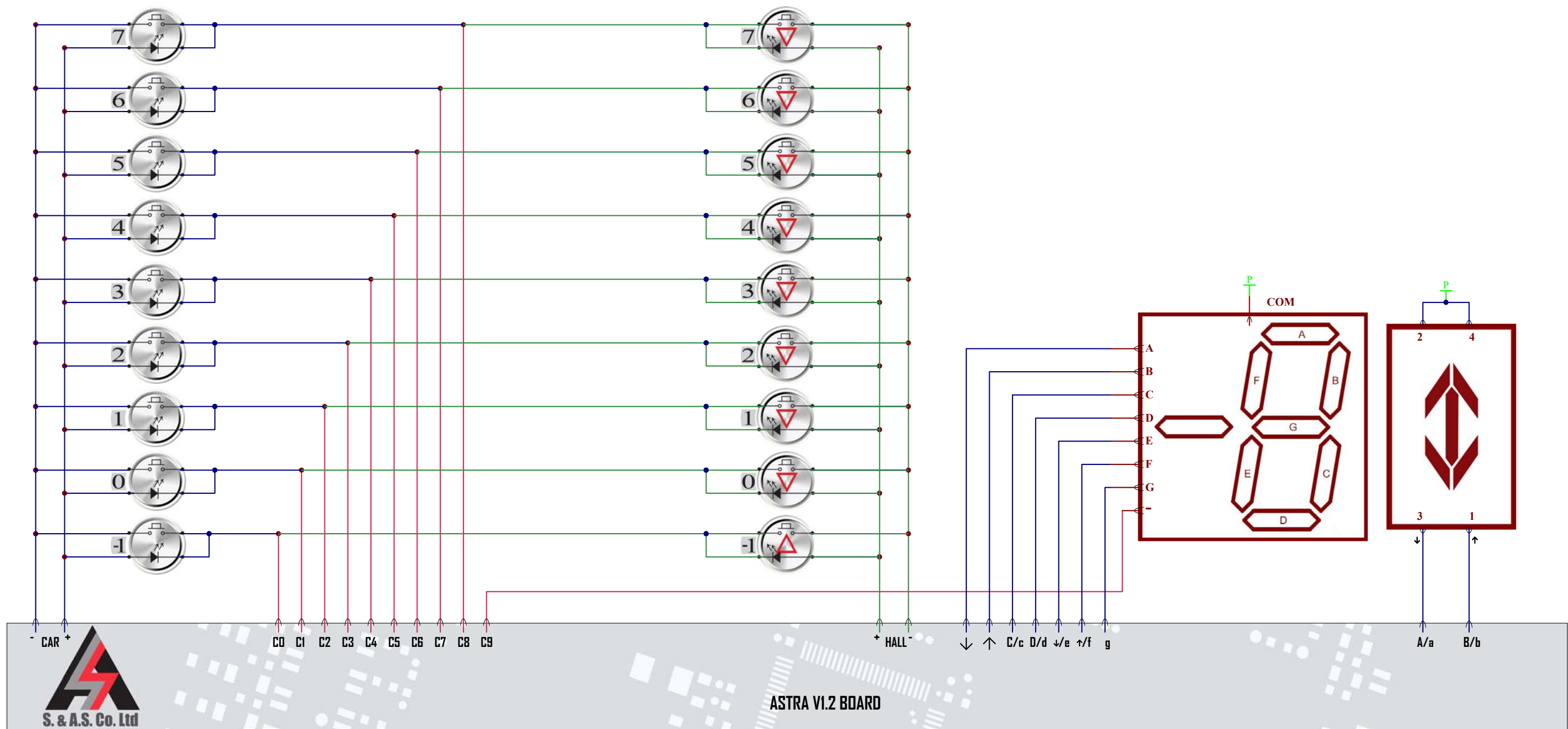
**ASTRA V1.2 BOARD**

**INDICATR= "7SG-ARO-"**  
**COLLECTV="DOWN"**

**S.&A.S. Ltd.**  
Jieh Chouf  
Lebanon  
support@sascontrollers.com

**ASTRA WIRING DIAG: CALLS / FLOOR INFORMATION - Down Collective- 9 stops 7Seg indicator with basements**

|            |                   |   |          |
|------------|-------------------|---|----------|
| Size<br>B  | FCSM No.<br>-     | DWG No.<br>BA120W11_Calls_7SegwBas-7SG-ARO-.Sch | Rev<br>1 |
| Scale<br>- | Sheet<br>11 of 12 |   |          |



INDICATR= "7SG-ARO+"  
 COLLECTV="DOWN"

S.&A.S. Ltd.  
 Jieh Chouf  
 Lebanon  
 support@sascontrollers.com

ASTRA WIRING DIAG: CALLS / FLOOR INFORMATION - Down Collective- 9 steps  
 7Seg indicator with basements

|            |                   |   |          |
|------------|-------------------|---|----------|
| Size<br>B  | FCSM No.<br>-     | DWG No.<br>BA120W12_Calls_7SegwBas - 7SG-ARO+.Sch | Rev<br>1 |
| Scale<br>- | Sheet<br>12 of 12 |   |          |