

**S. & A.S. Co. Ltd**

**MICROZED AR V3.1 BOARD**

17V 17V P +22V GND (-) CLGT LGHT

RELEVELING RELAY LOW SPD UP DIR STAR DOWN DIRECTION VALVE DN DIR HIGH SPEED VALVE HIGH SPD CDRV

RELAYS: Rd, Rdn, Rr1, Rh

CONTACTORS: Cp, Rdn, Rh

SWITCHES: CAR STEP MICROSWITCH, EMERGENCY STOP, DOOR CONTACTS, DOOR ZONE MAGNETIC SWITCH

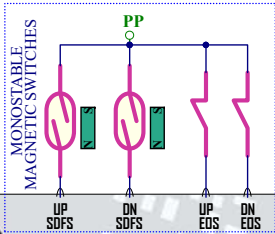
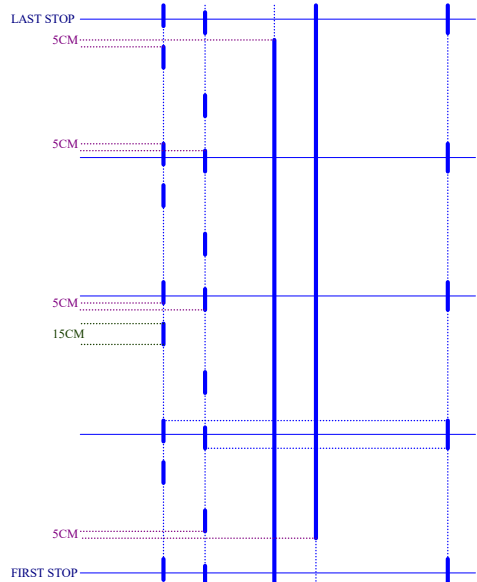
S. & A.S. Ltd.  
 Jieh Chouf  
 Lebanon  
 support@sascontrollers.com

**MICROZED AR WIRING DIAG: SUPPLY & OUTPUTS - HYDRAULIC DOL**

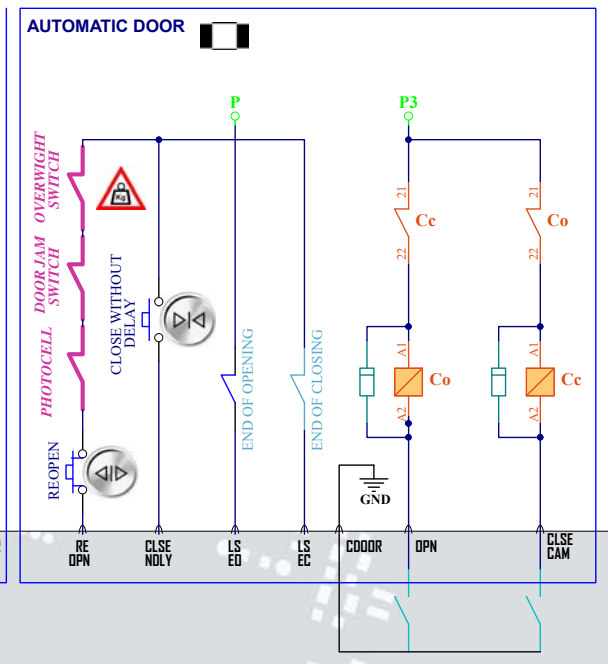
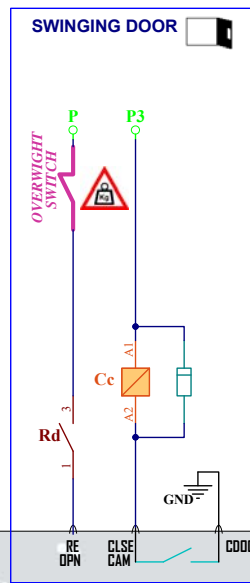
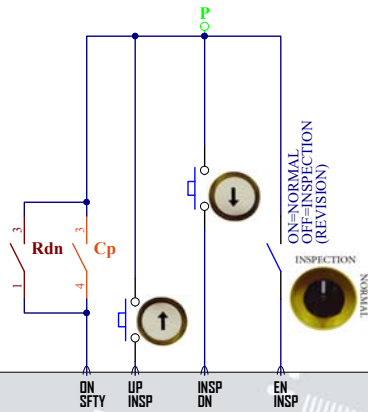
**DC Contactors**

Size B	FCSM No.	DWG No.	Rev
		BR310W1_Hyd_Supply_ContDC.Sch	1
Scale	Sheet		1 of 11





ZP DOOR ZONE MAGNETIC SWITCH



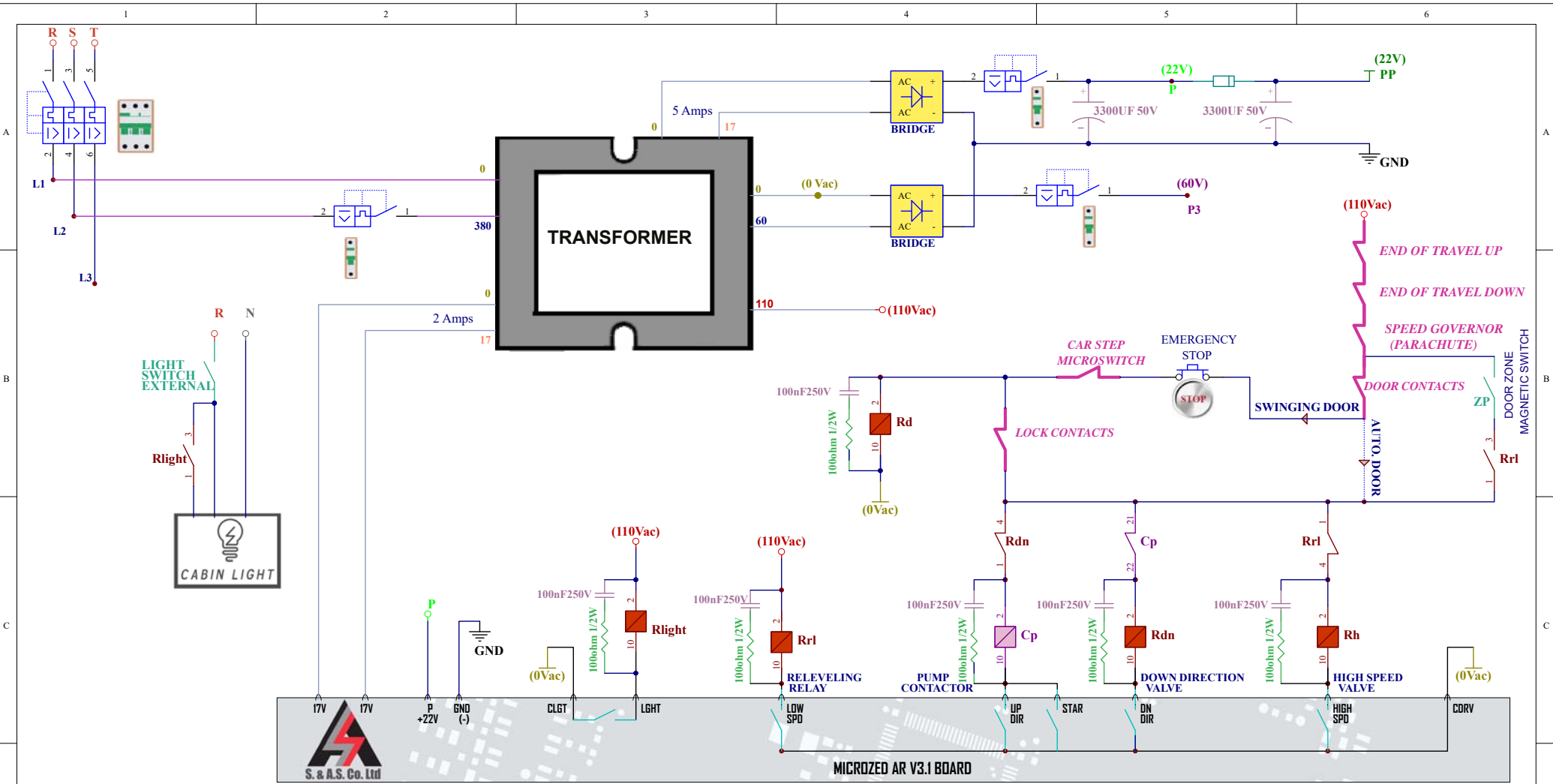
MICROZED AR V3.1 BOARD

Note:  
1- Use always the Monostable Magnetic Switches configuration for Hydraulic drive.

S.&A.S. Ltd.  
Jieh Chouf  
Lebanon  
support@sascontrollers.com

MICROZED AR WIRING DIAG: **INPUTS/DOOR INFO - HYDRAULIC DRIVE**  
**DC Contactors**

Size B	FCSM No.	DWG No.	Rev
		BR310W3_Hyd_lps_ContDC.Sch	1
Scale	Sheet		3 of 11

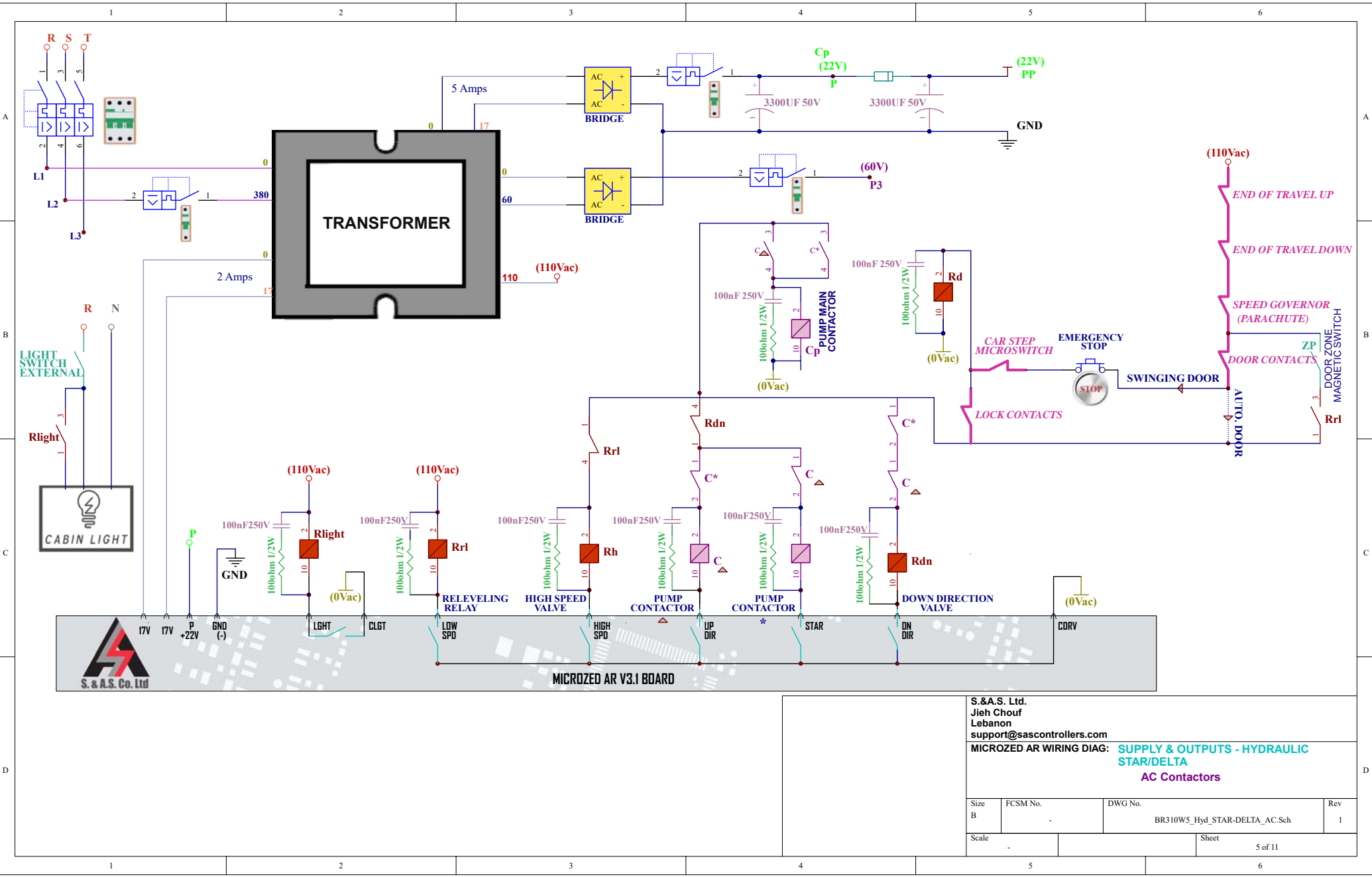


MICROZED AR V3.1 BOARD

S. & A.S. Ltd.  
 Jieh Chouf  
 Lebanon  
 support@sascontrollers.com

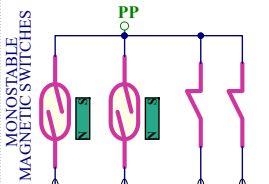
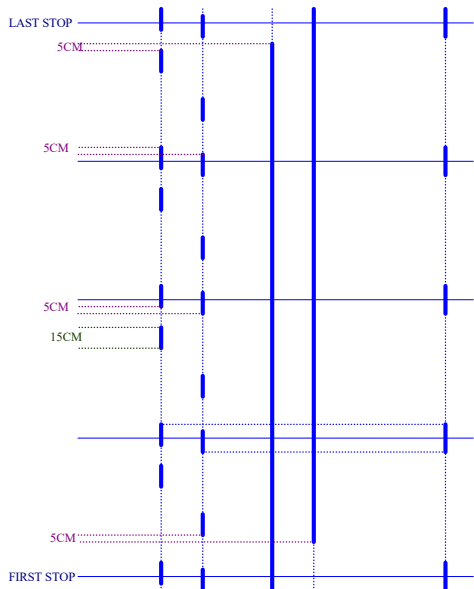
MICROZED AR WIRING DIAG: **SUPPLY & OUTPUTS - HYDRAULIC DOL AC Contactors**

Size B	FCSM No.	DWG No.	Rev
		BR310W4_Hyd_Supply_ContAC.Sch	1
Scale		Sheet	4 of 11

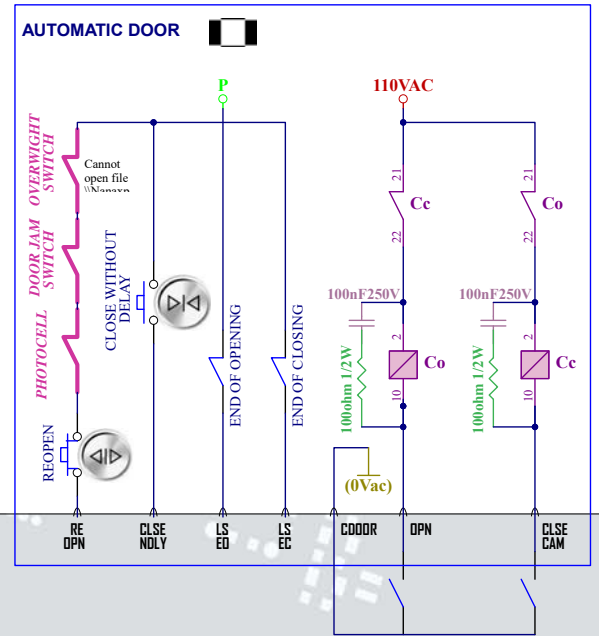
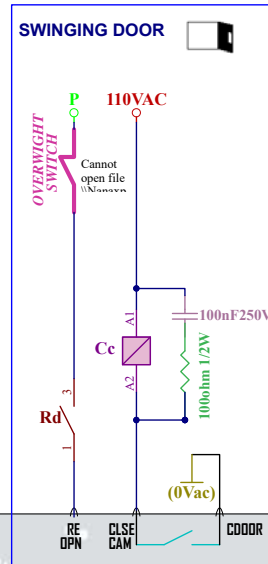
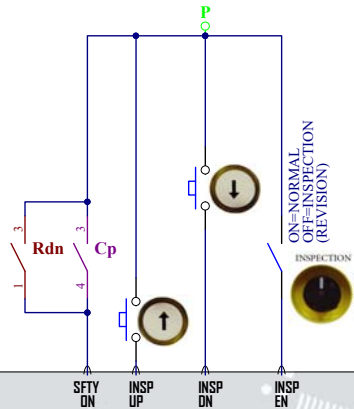


S.&A.S. Ltd.  
 Jieh Chouf  
 Lebanon  
 support@sascontrollers.com  
**MICROZED AR WIRING DIAG: SUPPLY & OUTPUTS - HYDRAULIC STAR/DELTA AC Contactors**

Size B	FCSM No.	DWG No.	Rev
		BR310W5_Hyd_STAR-DELTA_AC.Sch	1
Scale		Sheet	5 of 11



ZP DOOR ZONE MAGNETIC SWITCH



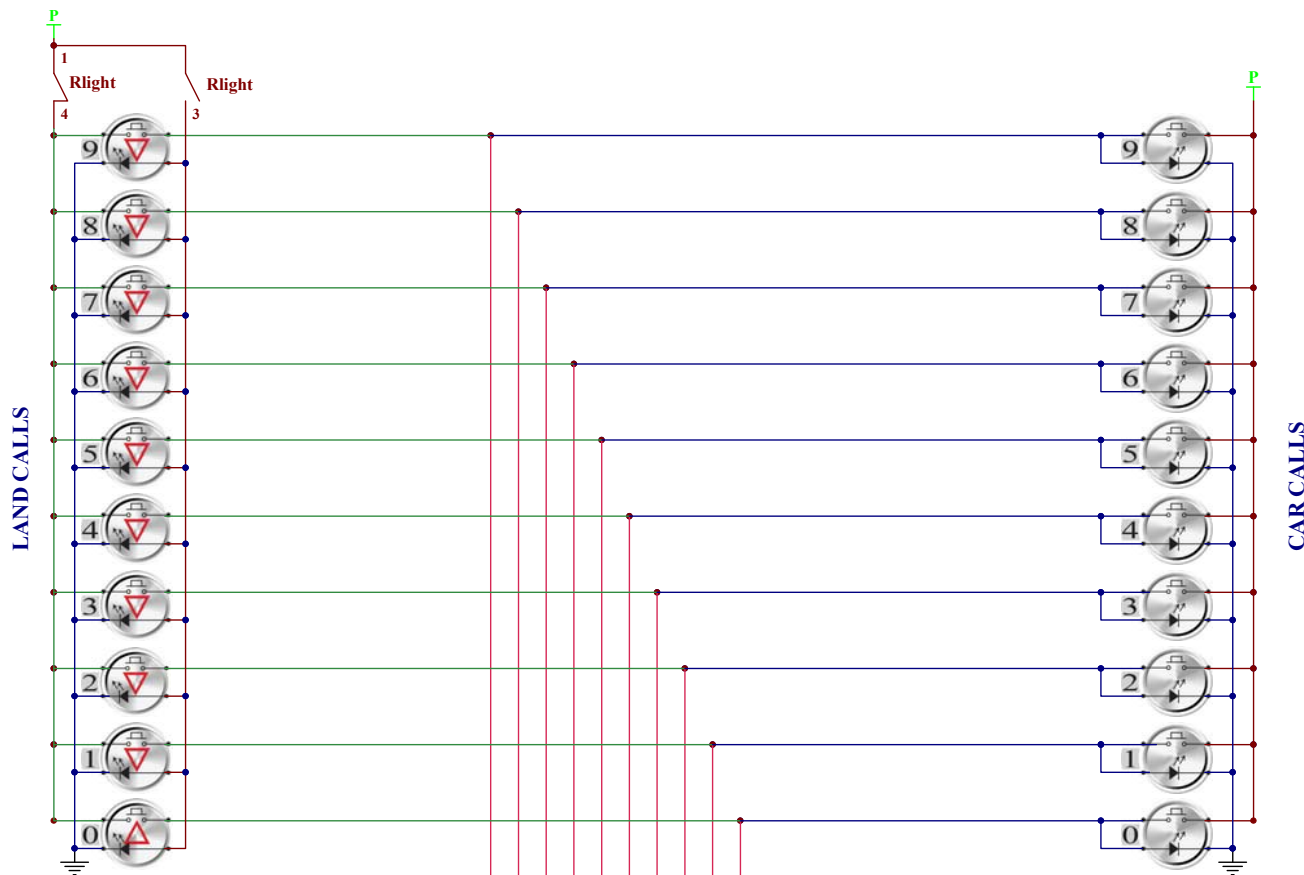
MICROZED AR V3.1 BOARD

Note:  
1- Use always the Monostable Magnetic Switches configuration for Hydraulic drive.

S.&A.S. Ltd.  
Jieh Chouf  
Lebanon  
support@sascontrollers.com

MICROZED AR WIRING DIAG: INPUTS/DOOR INFO - HYDRAULIC DRIVE  
AC Contactors

Size B	FCSM No.	DWG No.	Rev
		BR310W6_Hyd_Ips_ContAC.Sch	1
Scale		Sheet	6 of 11



S. & A.S. Co. Ltd

MICROZED AR V3.1 BOARD

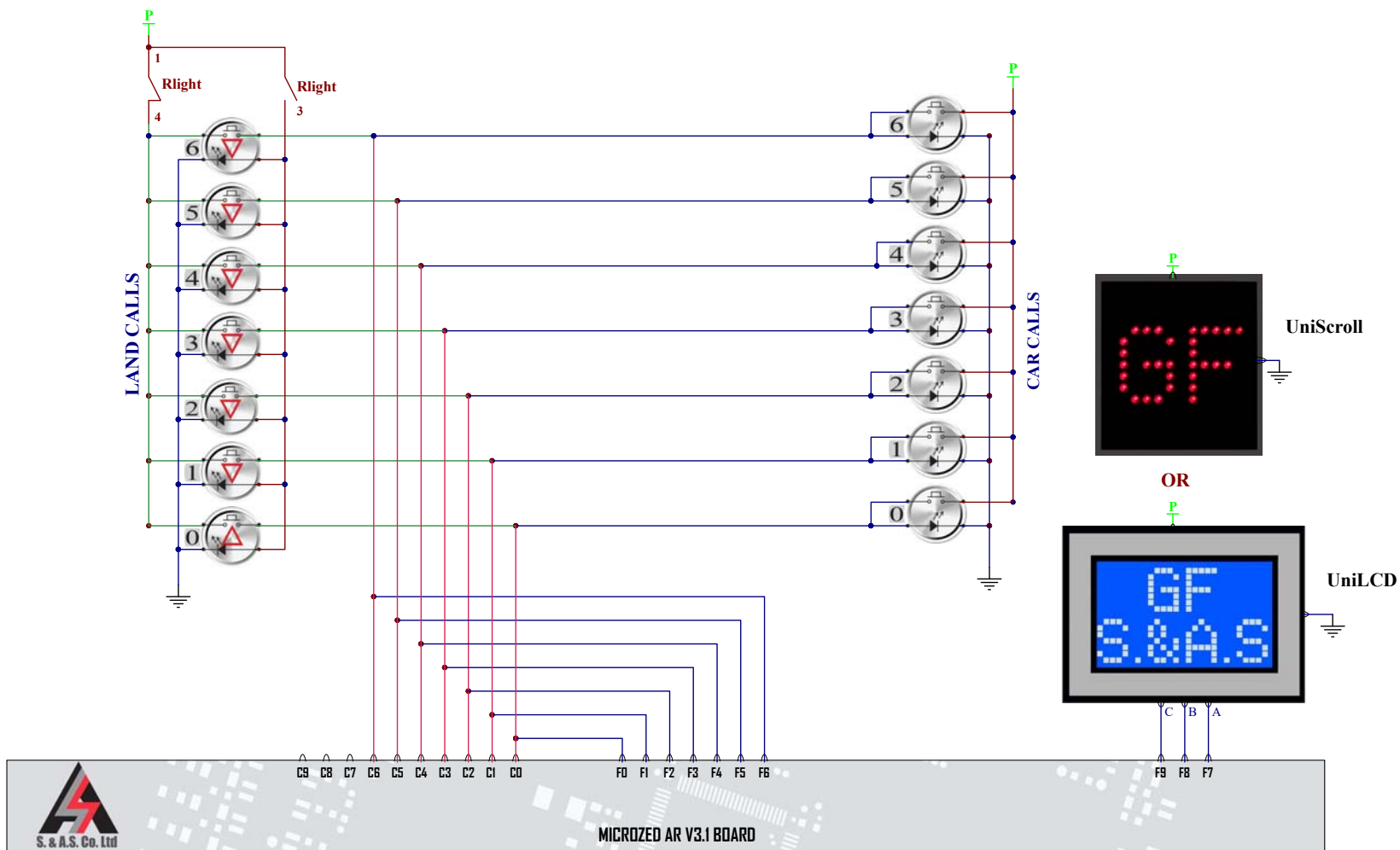
INDICATR="DECIMAL"

S.&A.S. Ltd.  
Jieh Chouf  
Lebanon  
support@sascontrollers.com

MICROZED AR WIRING DIAG: CALLS / FLOOR INFORMATION

Decimal Indicator - No Call Register

Size B	FCSM No. -	DWG No. BR310W7_Calls.Sch	Rev 1
Scale -	Sheet 7 of 11		



INDICATR="COLLECT7" or  
 INDICATR="GRAY R" or  
 INDICATR="BINARY R"

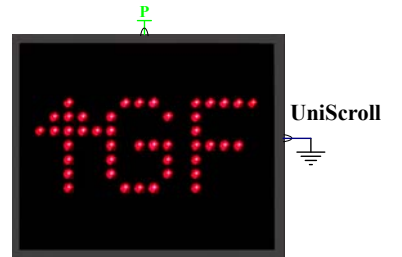
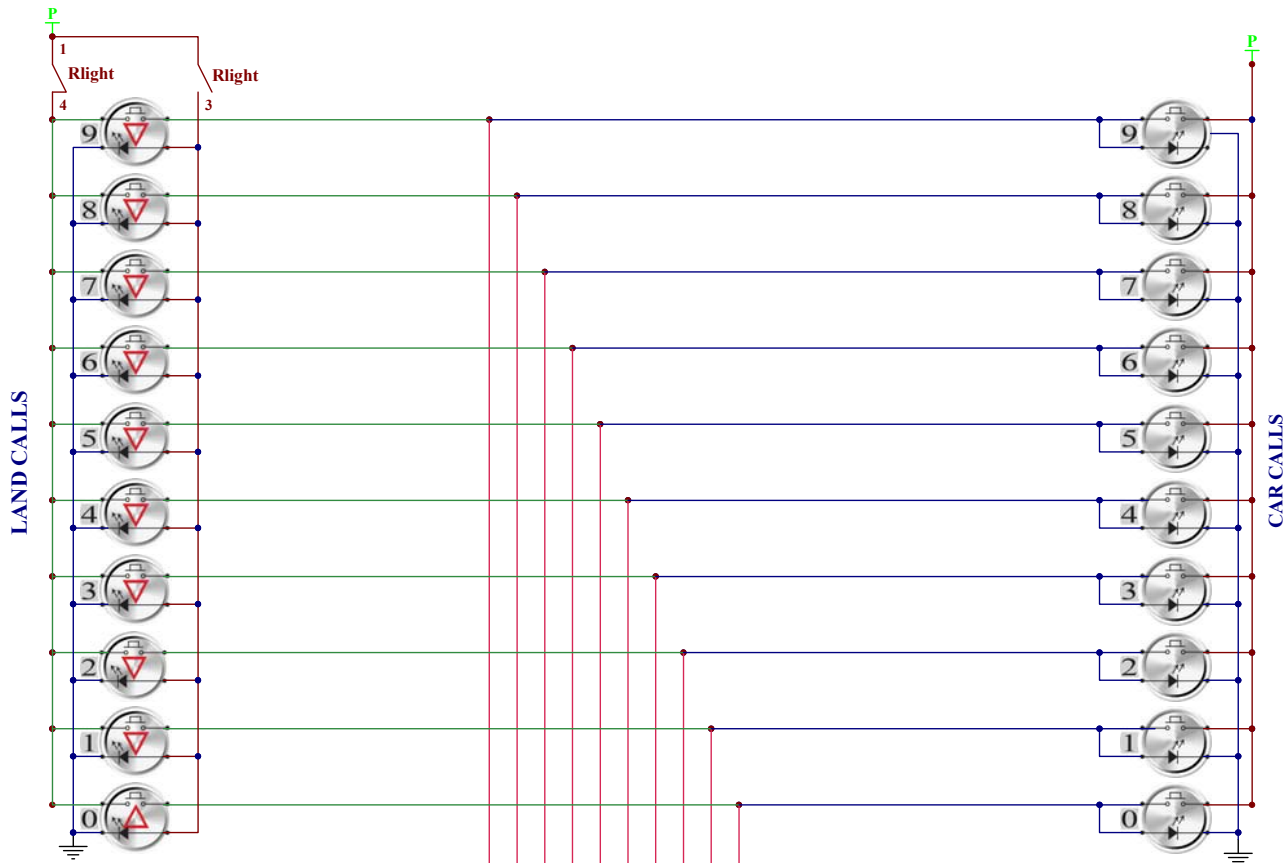
S.&A.S. Ltd.  
 Jieh Chouf  
 Lebanon  
 support@sascontrollers.com

MICROZED AR WIRING DIAG: CALLS / FLOOR INFORMATION

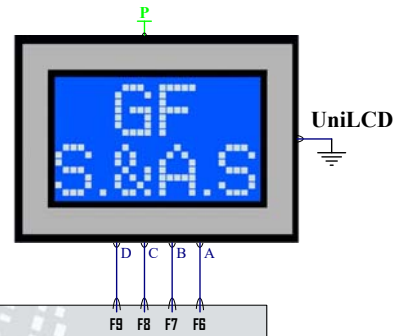
Gray/ Binary/ Collective with Call Register

Size B	FCSM No. -	DWG No. BR310W8_Calls.Sch	Rev 1
Scale -	Sheet 8 of 11		





OR



MICROZED AR V3.1 BOARD

INDICATR="GRAY NR" or  
INDICATR="BINARY NR"

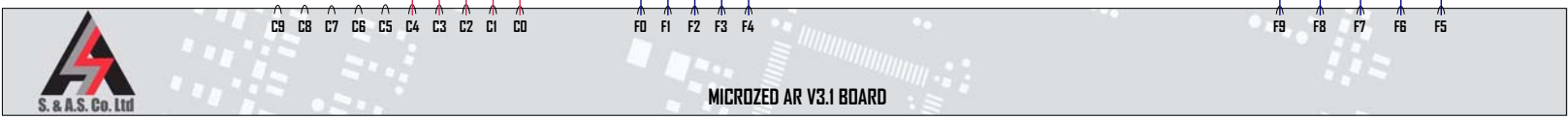
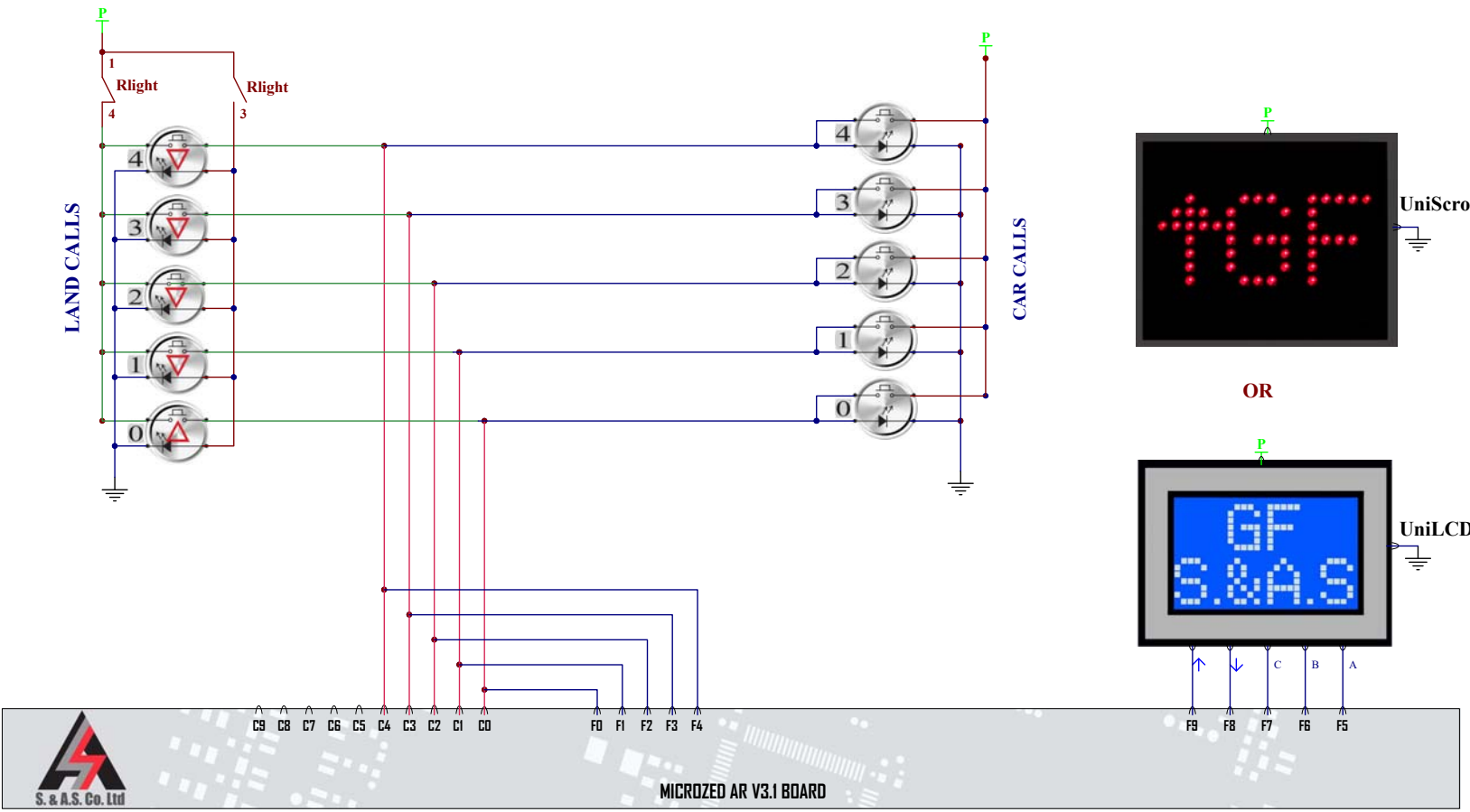
S.&A.S. Ltd.  
Jieh Chouf  
Lebanon  
support@sascontrollers.com

MICROZED AR WIRING DIAG: CALLS / FLOOR INFORMATION

Binary/Gray Indicator - No Call Register

Size B	FCSM No. -	DWG No. BR310W9_Calls.Sch	Rev 1
Scale -	Sheet 9 of 11		





INDICATR="ENHANCED"

S.&A.S. Ltd.  
 Jieh Chouf  
 Lebanon  
 support@sascontrollers.com  
**MICROZED AR WIRING DIAG: CALLS / FLOOR INFORMATION**

**S.&A.S. Indicator with Call Register**

Size B	FCSM No. -	DWG No. BR310W11_Calls.Sch	Rev 1
Scale -	Sheet 11 of 11		