

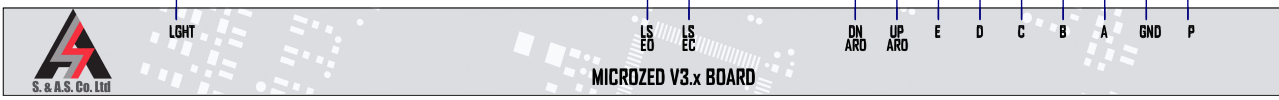
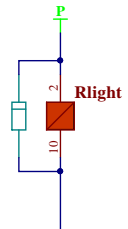
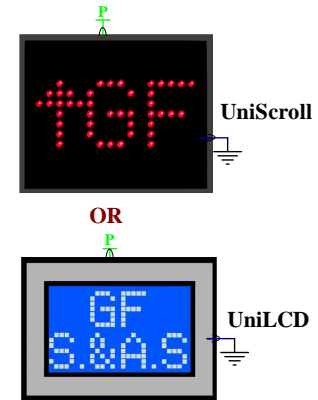
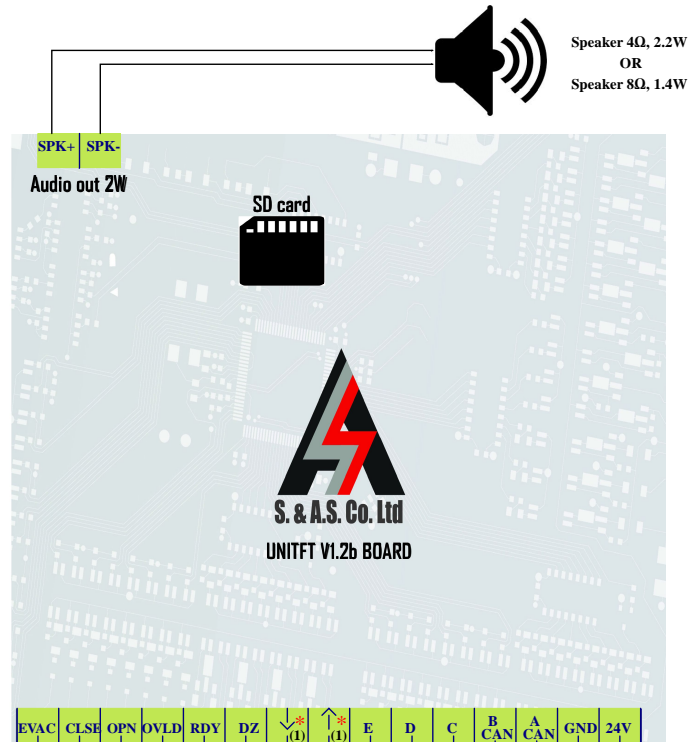
**UNITFT V1.2b wiring with Enhanced Indicator
Gong Announcement on Slow Edge/Floor Stop
Floor Announcement on Floor Stop/Slow Edge**

Available Announcements

- (1) Connected for Floor announcements including direction and special announcements
- (2) Connected for door opening/closing announcements
- (3) For customized announcements
- (4) To start/stop background music according to cabin light status
- (5) Connected for Floor Stop announcements

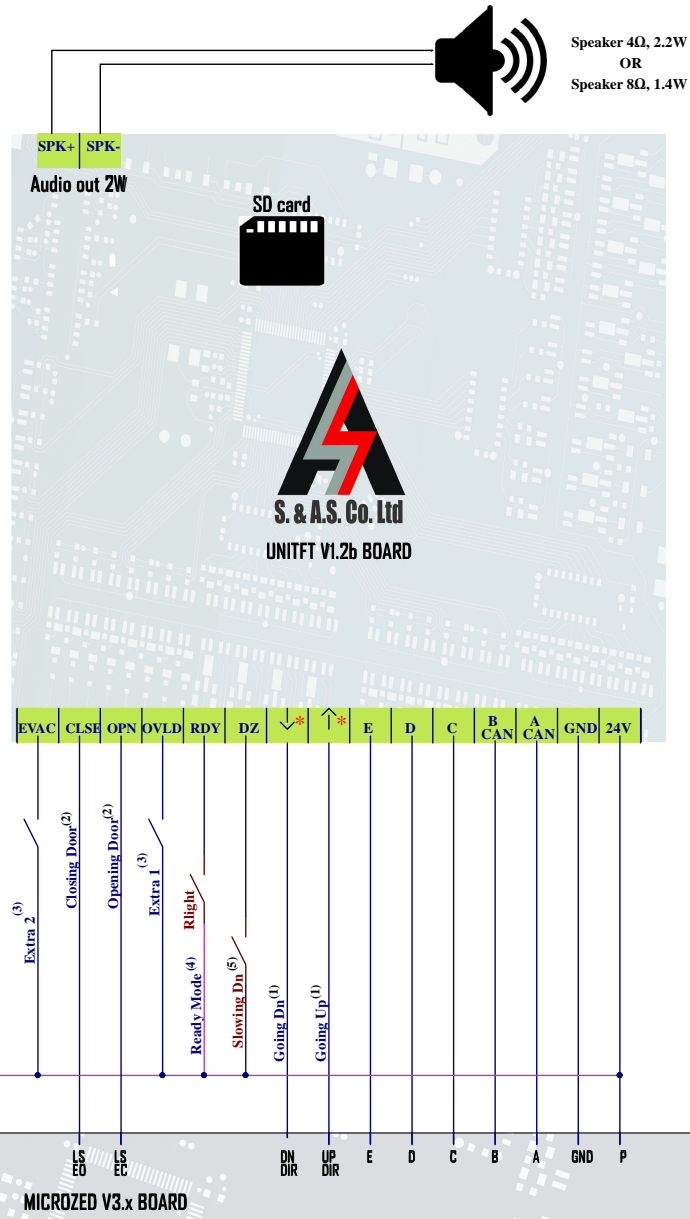
Settings

- Indicator Type = Enhanced
- Gong Announcement = On Slow Edge/ On Floor Stop
- Floor Announcement = On Slow Edge/ On Floor Stop
- RDY Terminal Config = Ready
- D_OPN Terminal Config = Open
- D_CLSE Terminal Config = Close
- DZ Terminal Config= DZ
- * Arrows Active = Lo
- * Up Terminal Config= Ind_Up
- * Dn Terminal Config= Ind_Dn



Title		
With Enhanced Indicator		
Size	Number	Revision
B	UNITFT V12b Wiring	1
Date:	14-Apr-23	Sheet 1 of 2
File:	\\.\UNITFTV1_ENHANCED.SchDoc	Drawn By: Nathalie Fayad

**UNITFT V1.2b wiring with Gray/Binary code Indicator
Gong Announcement on Slow Edge/Floor Stop
Floor Announcement on Floor Stop/Slow Edge**



Speaker 4Ω, 2.2W
OR
Speaker 8Ω, 1.4W

Available Announcements

- (1) Connected for Floor announcements including direction announcements
- (2) Connected for door opening/closing announcements
- (3) For customized announcements
- (4) To start/stop background music according to cabin light status
- (5) Connected for Slow edge announcements

Settings

Indicator Type = Gray/Binary
Gong Announcement = On Slow Edge/ On Floor Stop
Floor Announcement = On Slow Edge/ On Floor Stop
RDY Terminal Config = Ready
D_OPN Terminal Config = Open
D_CLSE Terminal Config = Close
DZ Terminal Config= Slow Edge
* Arrows Active = Lo
* Up Terminal Config= Going_Up
* Dn Terminal Config= Going_Dn

Title		
With Gray/Binary code Indicator		
Size	Number	Revision
B	UNITFT V12b Wiring	1
Date:	14-Apr-23	Sheet 2 of 2
File:	\\.\UNITFTTV_GRAY_BINARY.SchDoc	Drawn By: Nathalie Fayad